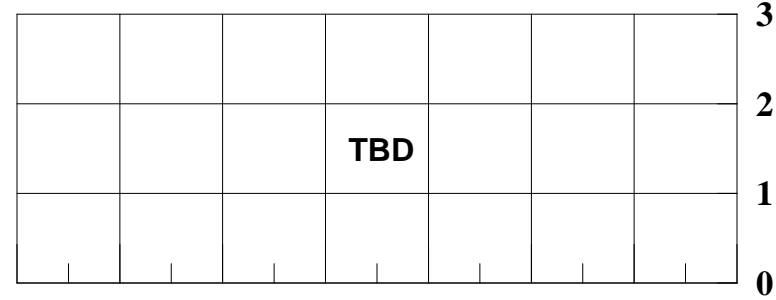
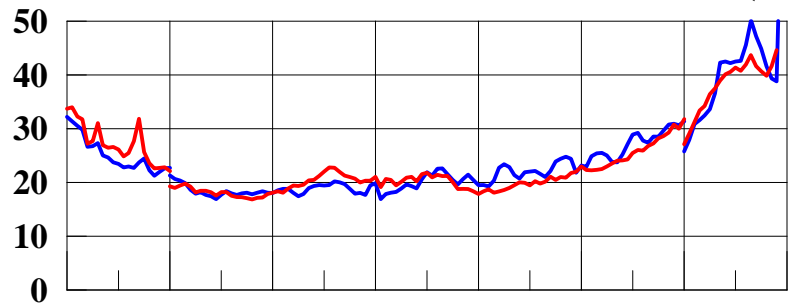


EVLA A-Band S/N 01-04 : T_{RX} & Axial Ratio
(5 May 2009)

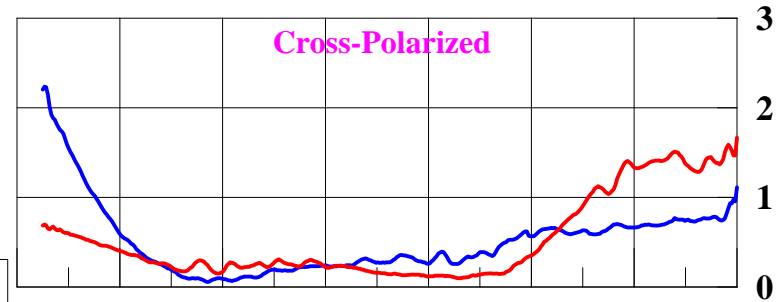
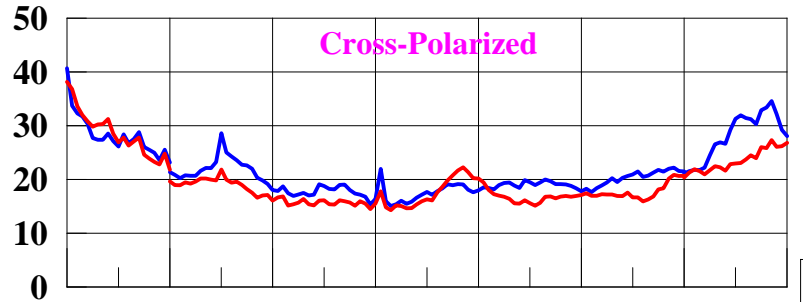
T_{RX} (K)

AR (dB)

A#01 - Ant 04

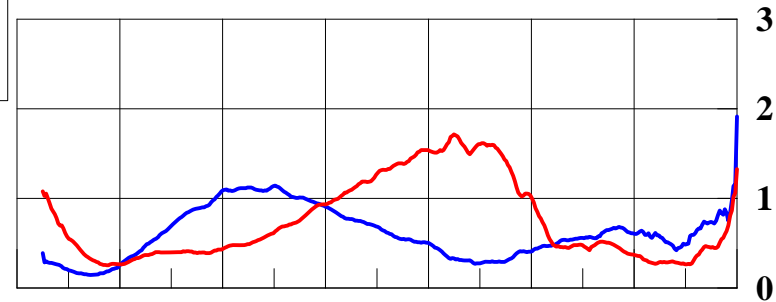
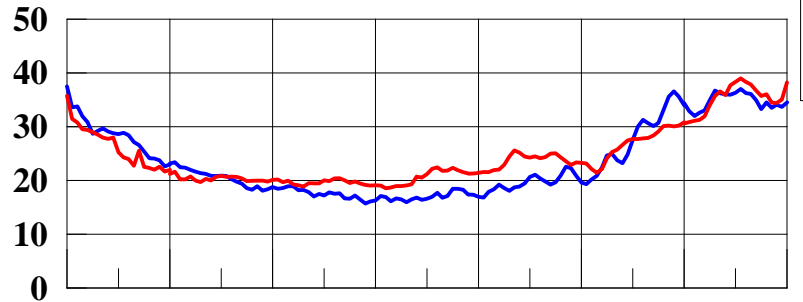


A#02 - Ant 02

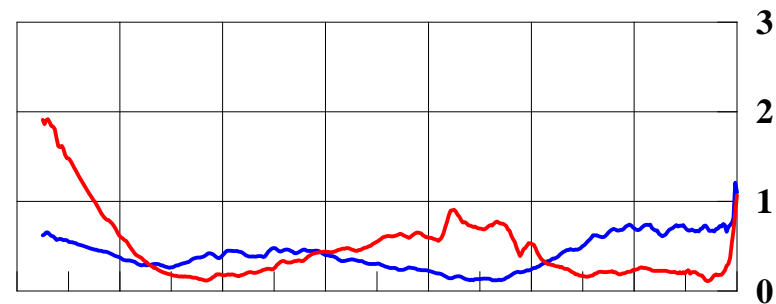
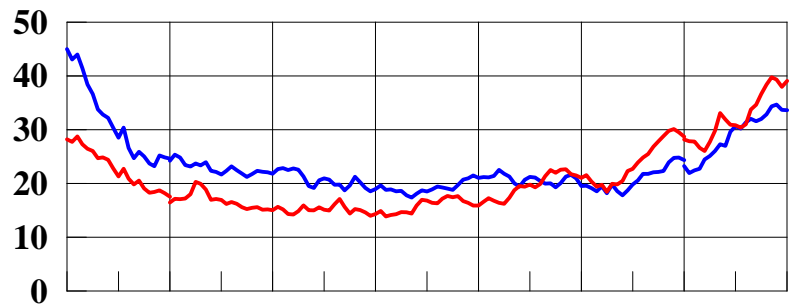


LCP
RCP

A#03 - Ant 03



A#04 - Ant 24



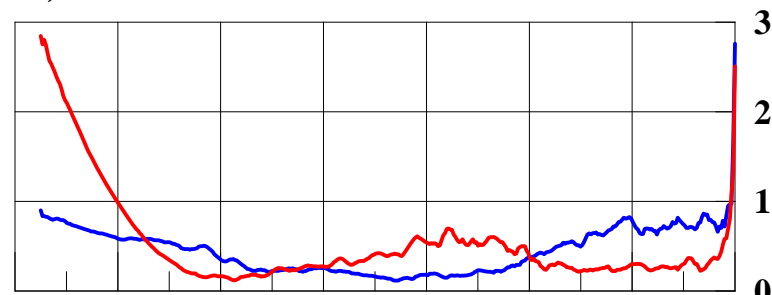
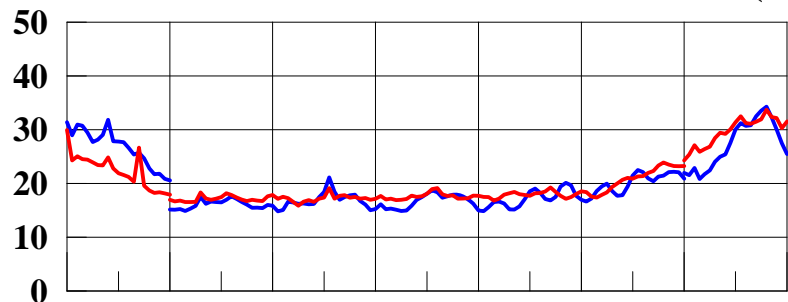
Sky Frequency (GHz)

EVLA A-Band S/N 05-08 : T_{RX} & Axial Ratio
(3 Feb 2009)

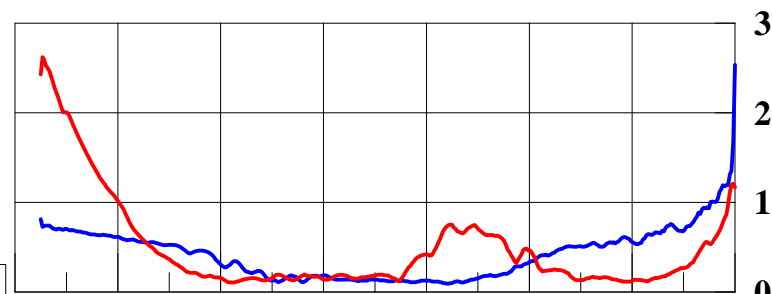
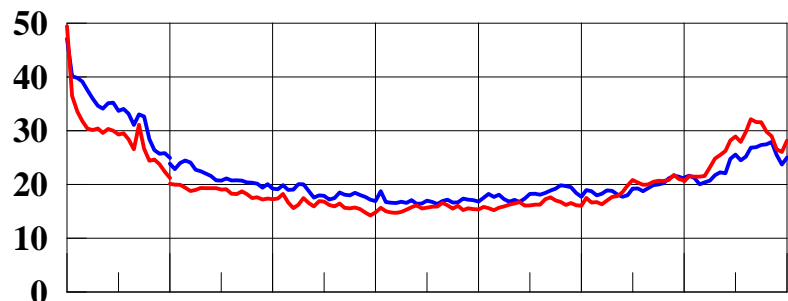
T_{RX} (K)

AR (dB)

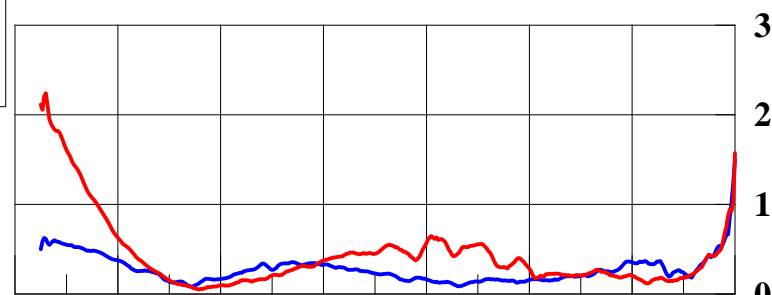
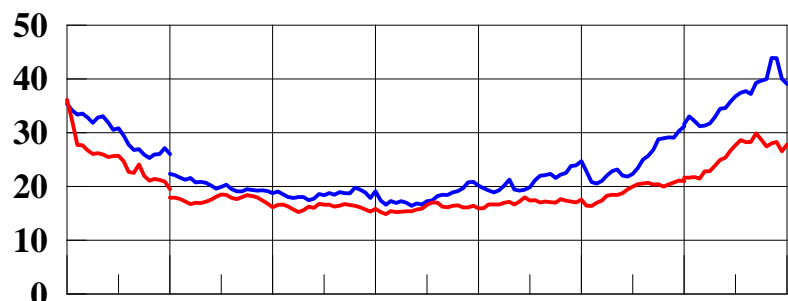
A#05 - Ant 01



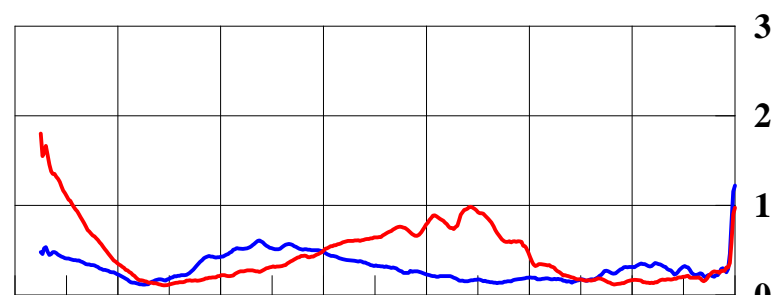
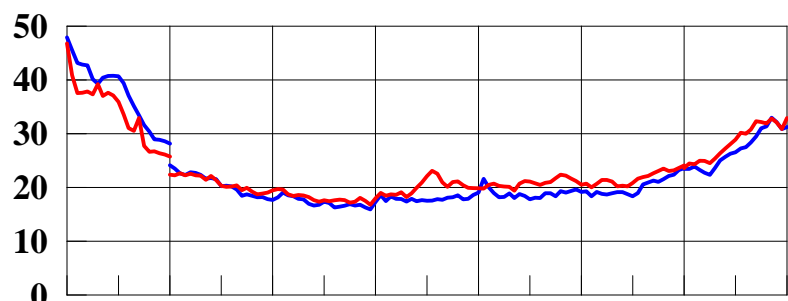
A#06 - Ant 25



A#07 - Ant 28



A#08 - Ant 09



LCP
RCP

Sky Frequency (GHz)

