



Figure 1. Transport of the ASTE 10 m antenna to Pampa la Bola



Figure 2. ASTE 10 m antenna installed at Pampa la Bola

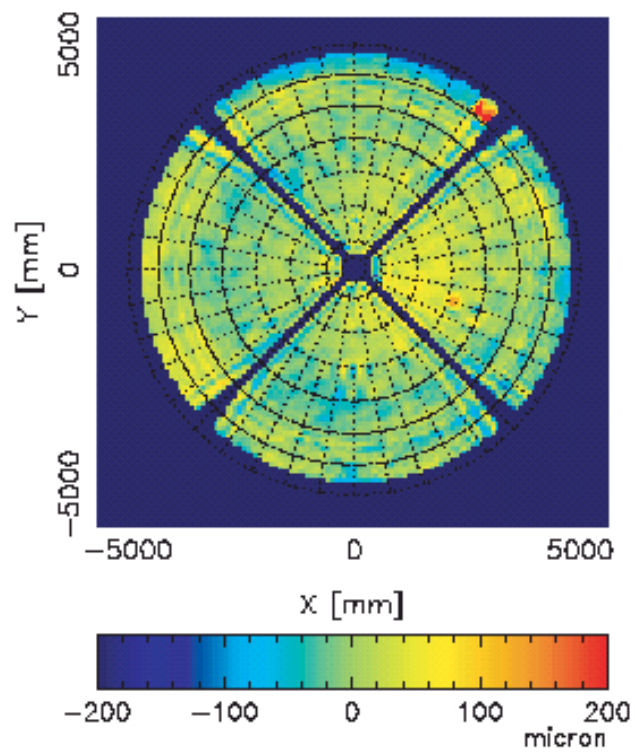


Figure 3. Recent result of Holography measurement. Current surface accuracy is about 30 micron.

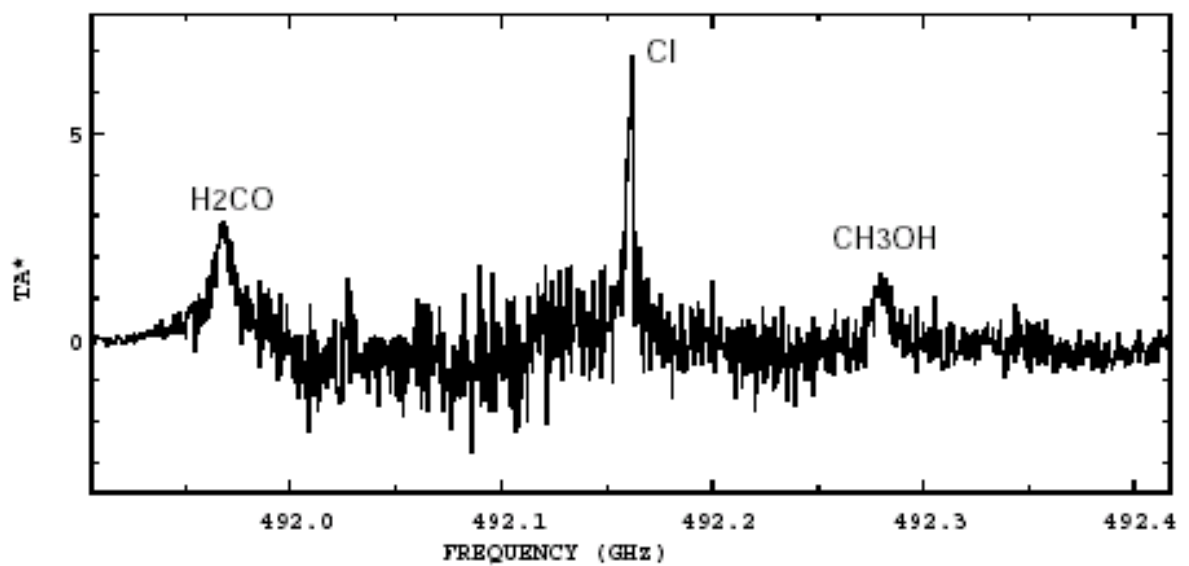


Figure 4. [CI] 492 GHz line detected toward Orion-KL region with ASTE.